

THE MOTOR YACHT BY PRESTIGE

PRESTIGE 520S

PRESTIGE 520S
SUMMARY

SPECIFICATIONS

KEY POINTS

GENERAL CONCEPT

TECHNICAL EQUIPMENT

DIMENSIONS

ENGINE SPECIFICATIONS

ELECTRONIC PACKAGES

PACKS

ATMOSPHERE

OPTIONS

MODEL YEAR 2022



 **PRESTIGE®**

SPECIFICATIONS

MAIN CHARACTERISTICS

Length over all _____ 16.1 m / 52'10"
 Hull length _____ 14.5 m / 47'7"
 Hull beam _____ 4.5 m / 14'9"
 Draft _____ 1.05 m / 3'5"
 Maxi air draft _____ 4.79 m / 15'9"
 Light
 displacement _____ 13500 kg / 29762 Lbs
 Full load
 displacement _____ 18200 kg / 40124 Lbs
 Berths _____ 6+1
 Cabins _____ 3 + option skipper
 CE category _____ B-12 / C-14 (in process)
 Prestige Engineering Dpt - JP CONCEPTS
 Architect _____ - Garroni Design

CAPACITIES

Fuel capacity _____ 1300 l / 343 US gal
 Water capacity _____ 640 l / 169 US gal
 Holding tank capacity _____ 120 l / 32 US gal

MOTORIZATION - PERFORMANCES

Engine power _____ VOLVO 2xIPS600 - D6 - 435HP
 Max. speed** _____ 27 kts
 Cruising speed** _____ 23 kts

* Optional equipment

** Mid-load speed, clean hull without antifouling

CONCEPT

The PRESTIGE 520S is distinguished by her powerful hull, designed for dependable high performance and excellent handling at sea. This 50' S-line has real character, distinguishing itself on the water with her sporty-chic style. True to the line, she features an incomparable open design. With her generous interior volume, the PRESTIGE 520 S lends herself to easy, enjoyable entertaining.



KEY FEATURES - EXTERIOR

- Sleek and powerful lines with large sliding sunroof with integrated windows
- L-Shaped cockpit seating: cozy and comfortable
- Wide cockpit door: easy movement
- Large hydraulic platform with autosteps: facilitates tender handling and access to the water
- Available with tender garage for jet tender or with fully-equipped crew cabin



Large L-shaped relax cockpit bench



Large opening on the cockpit



Large hydraulic platform



2 possible versions: garage or skipper cabin

KEY FEATURES - INTERIOR

- 360° vision: exceptional natural light and visibility
- Separate access to master's stateroom: live in your private suite
- Aft kitchen: centrally located and a focal point of life onboard
- Sliding door in saloon: access to side deck and ventilation
- Convertible pilot seat: provides additional seating
- Volvo IPS 600: performance and joystick maneuvering



Separate access to master's stateroom



Aft kitchen: centrally located and a focal point of life onboard

SMART COCKPIT



Convertible steering bench



Side wheelhouse door to starboard

SHIP CONTROL TECHNOLOGY : CONNECTED BOAT

Our Ship Control technology gives access to all the electrical functions on board a Prestige yacht via the multi-function navigation screens on the dashboard or via smartphone or tablet.

Making cruising simpler

This innovative system, based on a multiplexed system, is easy to use and secure. A quick tap on the navigation screen interface or any tablet or smartphone connected to the boat's Wi-Fi and Ship Control accesses all the systems on board. Cruising is simplified and more pleasant.

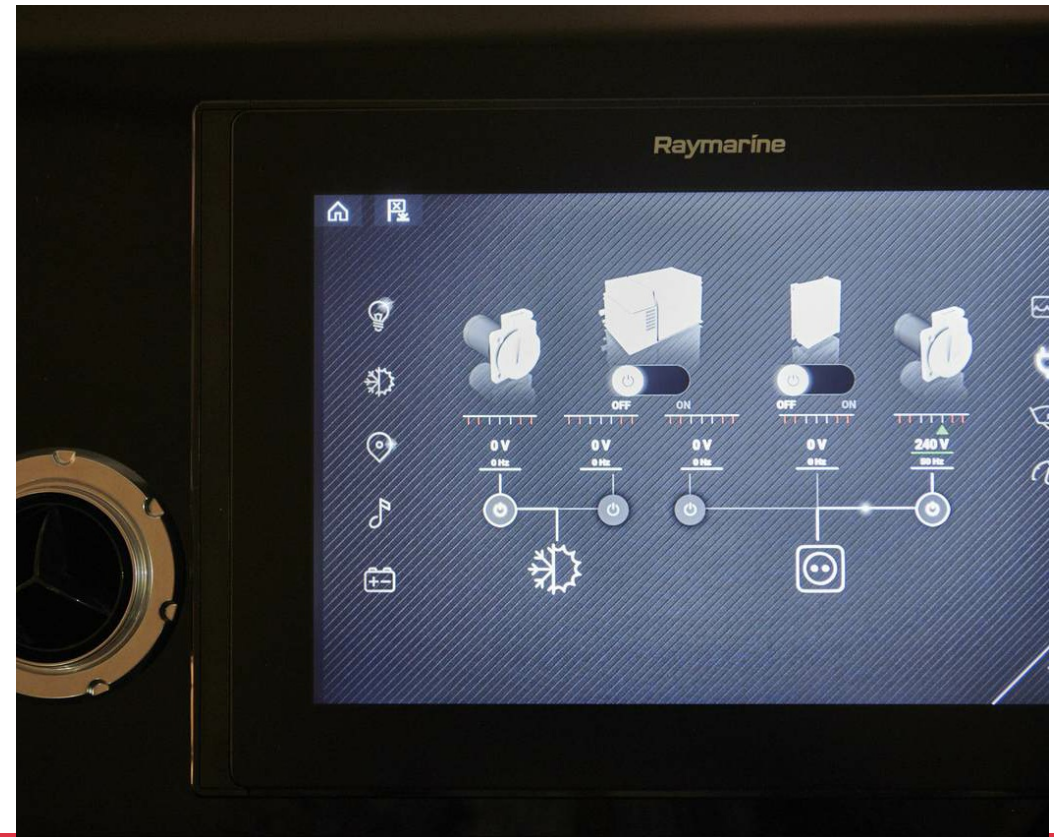
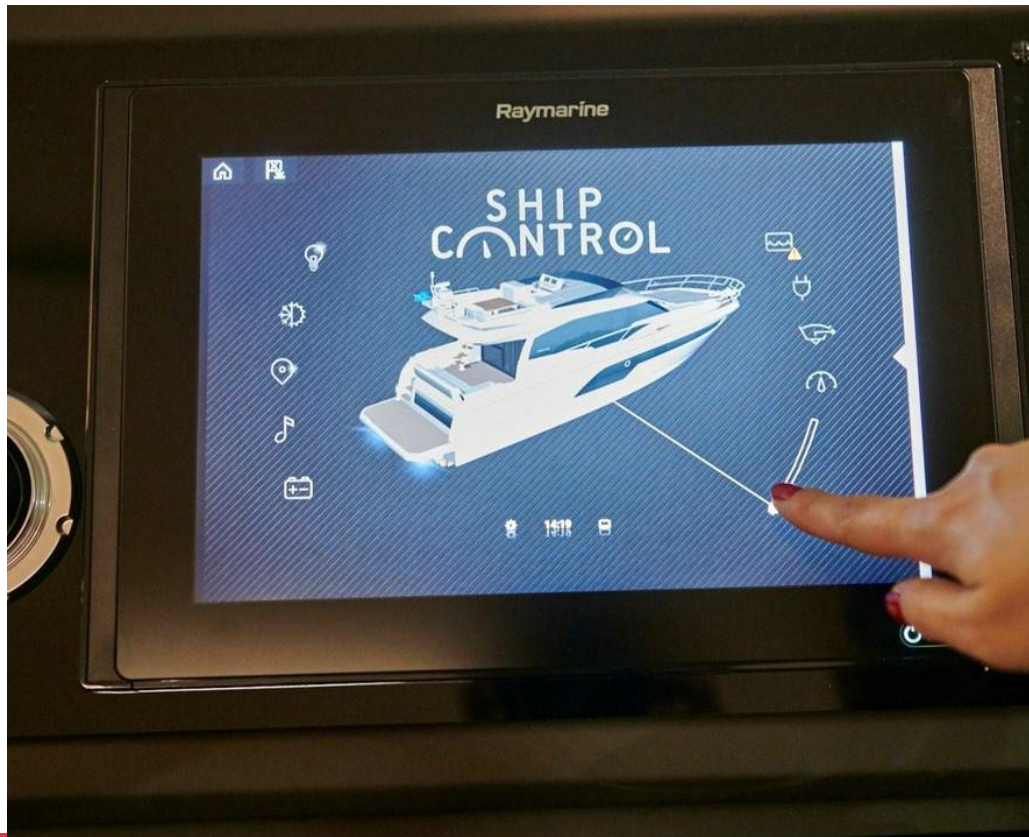
Connected boat

With the Ship Control a set of universal icons allows you to operate the main functions of the boat. Everything is at your fingertips and the boat obeys your every command.

With a click on the chosen icon you can access all on-board functions: lighting, air conditioning, sound systems, electrical power management, bilge pumps or navigation page. It also allows to check the level of batteries, tanks and the engine data.

Smart information

Underway or at anchor, Ship Control provides a quick, easy view of status of on board systems, contributing to your comfort, safety and the pleasure of life on board Prestige yachts.



SHIP CONTROL TECHNOLOGY : CONNECTED BOAT

SHIP CONTROL

- LIGHTING
- CLIMATE CONTROL
- NAVIGATION
- AUDIO
- BATTERIES

- TANKS —
- MANAGE AC SOURCES —
- BILGE PUMPS —
- ENGINES —

08:24

Welcome screen

Shows status of navigation lights and projectors

Lighting

Manage lighting (ON/OFF/dimmer) for each area (saloon, cabins, galley...)

Climate control

Compressor control and management of thermostat controls for each zone

Navigation

- Display navigation information
- Chain counter for windlass

Audio

- Audio controls by zone (saloon, flybridge, cockpit)
- Source selection and control (ATOLL or Fusion)

Batteries

- Monitor battery levels across multiple banks (house, engine, thrusters...)
- Monitor consumption, charging and general battery health (if additional IBS monitoring is installed)
- Display alarms

Tanks

- Monitor levels in each tank (fuel, water, holding tanks ...)
- Discharge
- Consumption
- Display alarms (high or low level)

Manage AC sources

- Manage AC sources and selection (between shorepower, genset and inverter)
- Display alarms (reversed polarity)

Bilge pumps

- Operation of bilge pumps
- Display alarms

Engines

Display engine information

Connectivity

Display Ship Control on all navigation screens and through wireless devices connected to the wifi network onboard

Smartphone compatibility starting with version V8.7.1

VERSIONS

SKIPPER CABIN VERSION



TENDER GARAGE VERSION



CABIN SKIPPER VERSION (STANDARD)



TENDER GARAGE PACKAGE (OPTION)

INCLUDES:

- Transom garage for tender with electrically-opening door
- Combination sunpad/sofa relaxed seating in cockpit
- Hydraulic swim platform
- Tender handling system with rollers and electric winch
- Electric inflator for tender



Transom garage for tender with electrically-opening door



Plateforme de bain hydraulique



Electric winch

DESIGN

The Prestige 520 offers a specific hull for an optimal propulsion performance, notably thanks to the POD system: finely tapered, V-shaped, planing hull and engines placed slightly forward for optimum weight distribution.

The hull shape was developed for POD propulsion IPS 600. Linked to the POD propulsion, the joystick control allows a excellent maneuverability.



MAIN DECK - EXTERIOR



- A Large hydraulic swim platform
- B Transom galley
- C Large L-shaped cockpit bench, relax backrest (option)
- D Access to the skipper cabin
- E Cockpit saloon transformable into sun mattress (option)
- F Side door to starboard
- G New forward sunpad concept, large hatches

MAIN DECK - EXTERIOR



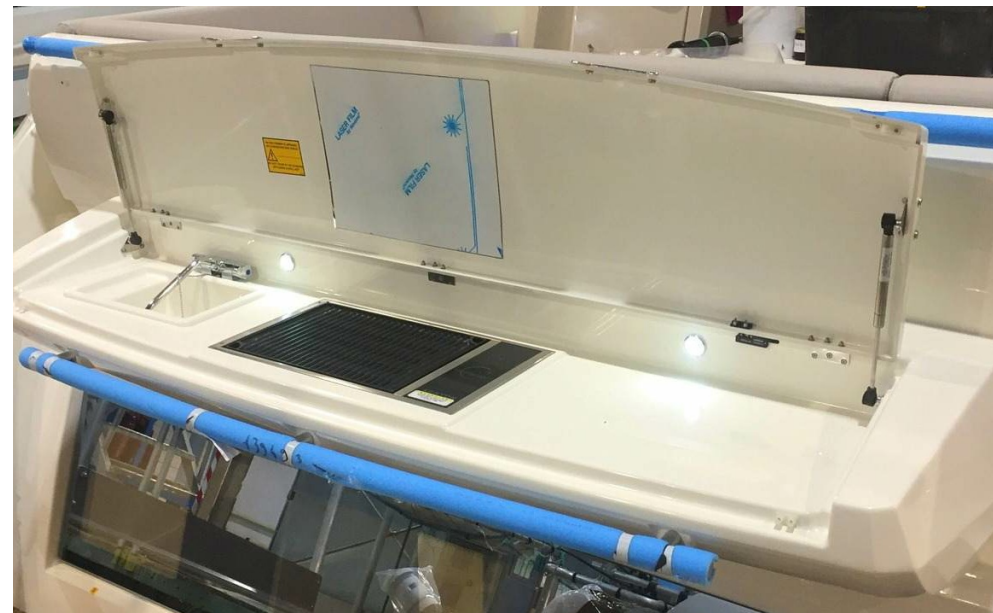
Large side decks



New forward sunpad concept

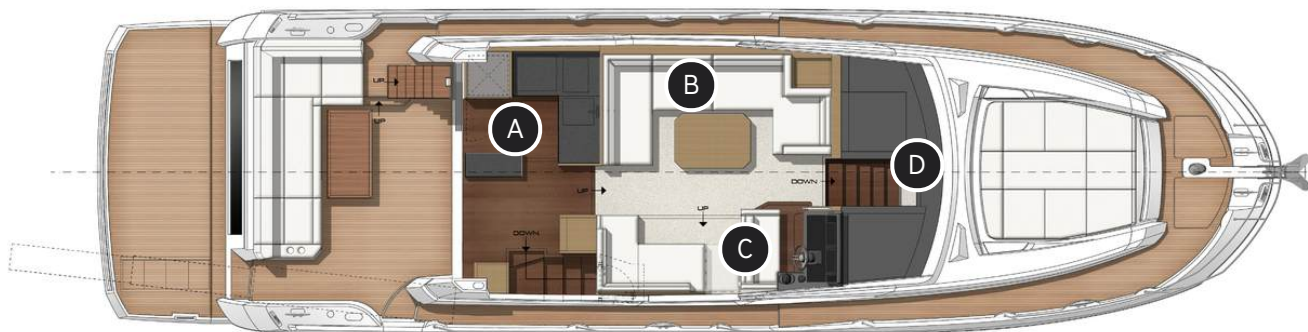


Large hydraulic platform



Transom galley

MAIN DECK - INTERIOR



- A** Aft kitchen, central to living space
- B** Vis-a-vis sofas for an even more generous and inviting living space
- C** Convertible pilot seat, expanding the saloon area
- D** 360° view and incredible natural light thanks to the lowered windows lines

MAIN DECK - INTERIOR

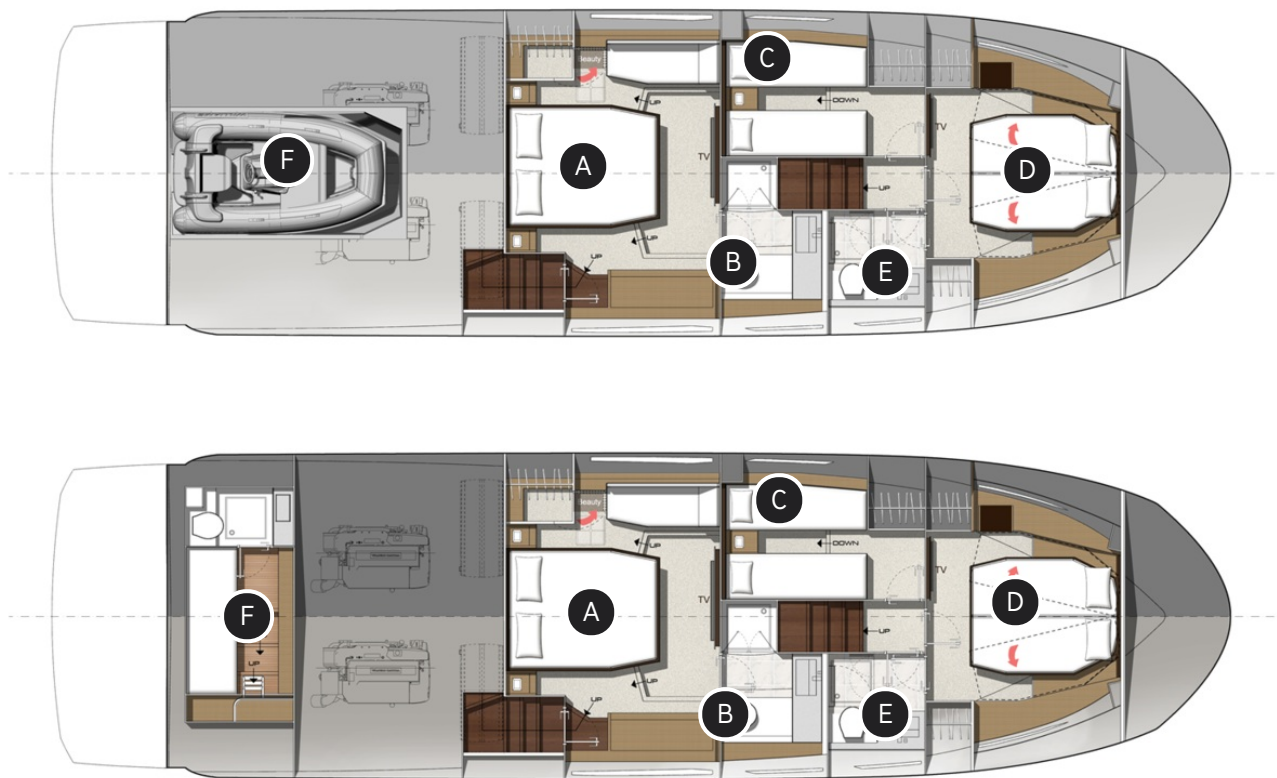


Fully-equipped galley: sink, microwave/grill, induction cooktop, fridge, freezer, dishwasher, cooker hood, ice maker



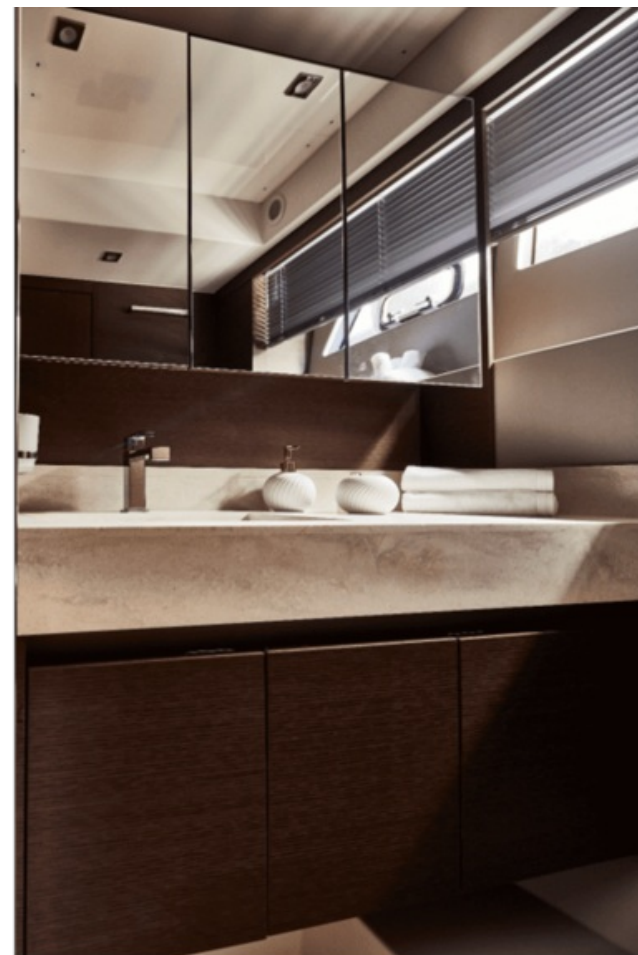
LED TV 32" with lifting cabinet

LOWER DECK



- A** Master stateroom with independant access, large windows, sofa and storage
- B** Private bathroom, direct access from the master stateroom
- C** Guest stateroom with 2 single beds, storage
- D** VIP stateroom: double bed convertible in 2 single beds
- E** Bathroom with direct access from the VIP stateroom
- F** Garage version or skipper cabin

MASTER STATEROOM



VIP STATEROOM



GUEST STATEROOM



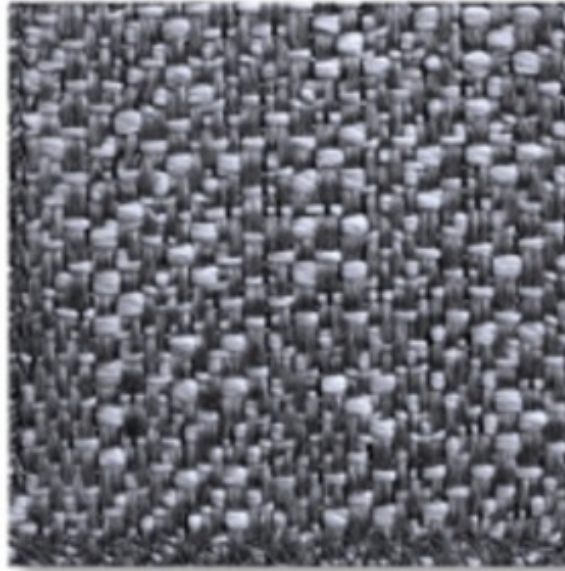
MODEL YEAR 2022

MODIFICATIONS TO STANDARD

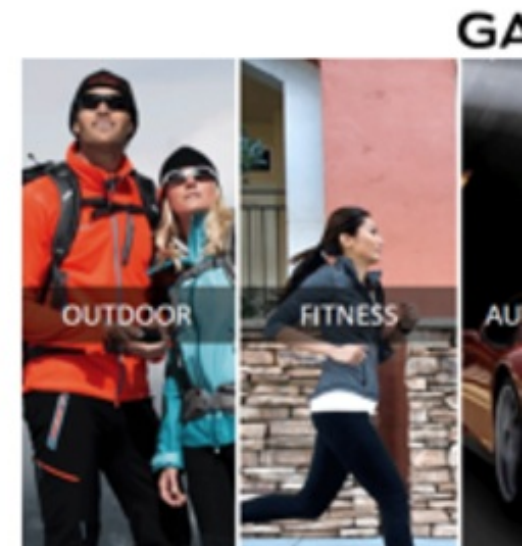
- Exterior cushions Iron
- Interior upholstery Dolce
- Interior pilot seats: Dolce – Hitch
- Bed head and sofa in staterooms: Grey Libra
- Vanity desk improvements in staterooms
- Shower doors improvements
- Adding reading lights in staterooms
- Additional USB plug on each side of the Master stateroom bed
- New White Oak interior woodwork
- Beige caulking on exterior teak
- Grey lacquer on galley doors
- Venaro White Corian countertop
- New interior helm console
-
-

NEW OPTIONS

- Exterior cushions upgrade to Fidji
- Interior upholstery Pirate
- Interior upholstery Horizon
- Garmin electronic package (see detail)



Fidji



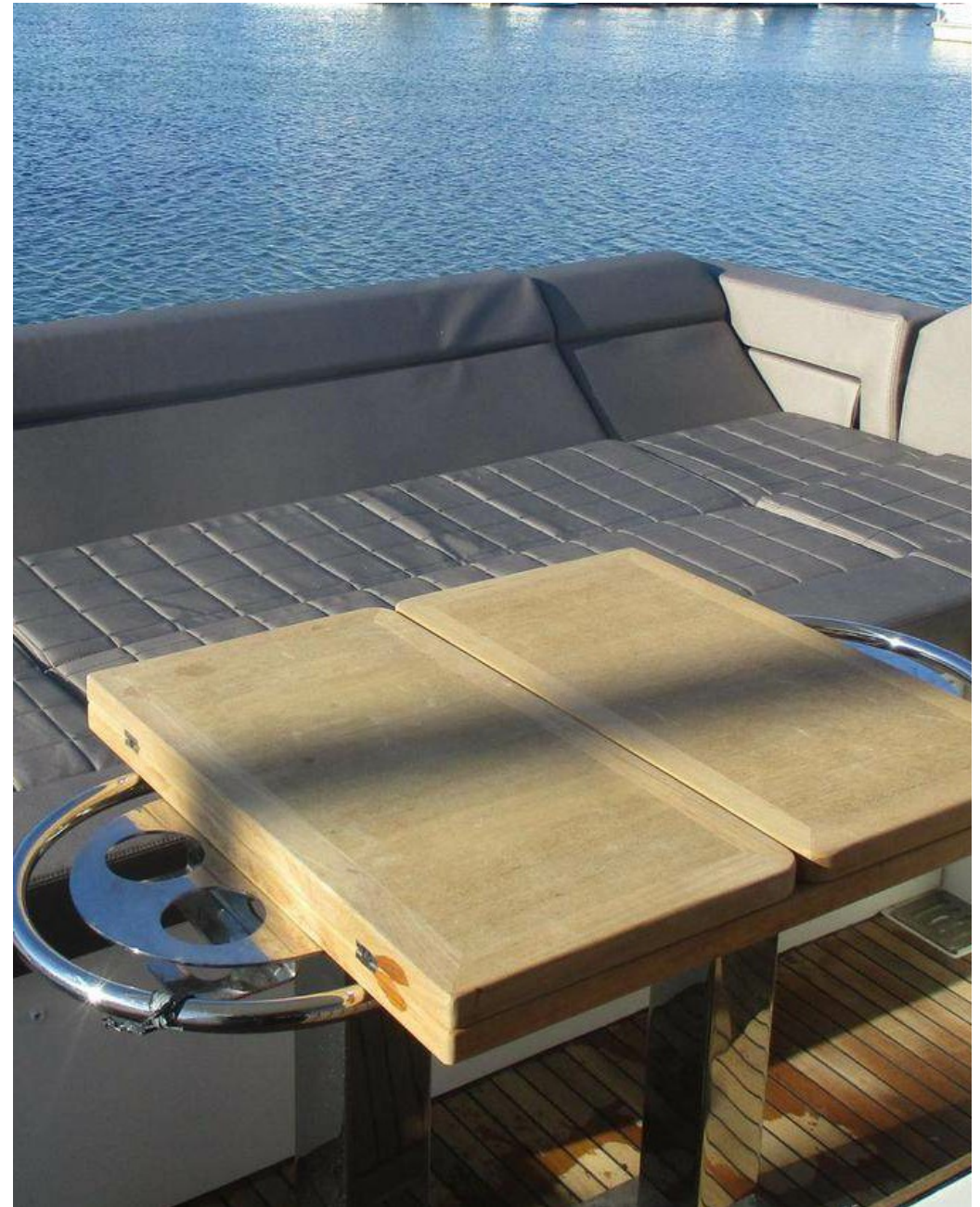
TRIM LEVEL PREFERENCE 2022

INCLUDES :

- Bow thruster dual prop 140 Kgf
- Teak cockpit table with folding leaves
- Maindeck protective covers: cockpit seating and cockpit table covers
- Opening window to port
- Inverter 2000W



Opening window to port



Teak cockpit table with folding leaves

TRIM LEVEL EXCELLENCE 2022

INCLUDES:

- TRIM LEVEL "PREFERENCE"
- Bow thruster dual prop 140 Kgf
- Teak cockpit table with folding leaves
- Maindeck protective covers: cockpit seating and cockpit table covers
- Opening window to port
- Inverter 2000W

PLUS:

- Generator 11 Kw with silent exhaust (generator 13,5 Kw in 230 / 115 / 60 Hz available)
- Upgrade to Miele microwave
- Stern docking winch to starboard
- Freshwater/saltwater wash-down system in cockpit and anchor locker with dedicated pump
- Dock water inlet



Opening window to port



Teak cockpit table with folding leaves

BOWERS & WILKINS: SOUND PACKAGE



Touchscreen control
Volume and input controls
Individual control of both zones
Output of control to GPS screens
(if Ship Control is installed)



3-zone Atoll amplifier
BlueTooth
Remote USB plug
FM/AM
Optical connection to saloon TV
(if entertainment package is installed)

Cockpit: 2 x Marine 6



Saloon:
2 x CCM632
ASW Subwoofer

**Replaces standard Fusion player and speakers*

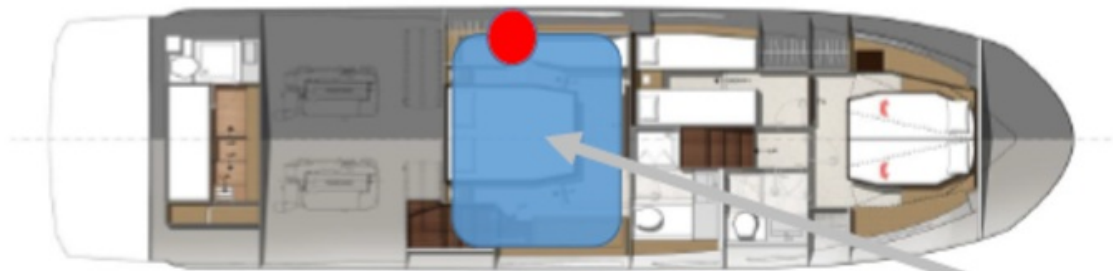
BOWERS AND WILKINS : OPTION IN MASTER STATEROOM



Touchscreen control
Discreet screen
Volume and input controls



Single zone Atoll amplifier
BlueTooth
Optical connection to stateroom TV
(if entertainment package is installed)



Stateroom:
2 x CCM632
ASW Subwoofer

BOWERS & WILKINS

Founded in 1966, Bowers & Wilkins has a long history of technological innovation in its pursuit of the perfect loudspeaker. The addition of this venerable brand to Prestige ensures the best possible audio experience onboard.

Marine 6 – Waterproof speaker



- Dual-function speaker capable of surviving the extremes of the marine environment
- 150mm (6") polypropylene bass/midrange driver
- 25mm (1") tweeter

CCM632 – in-ceiling speaker



- Full-range driver with beautifully well-balanced sound
- 60W output power
- 75mm (3") cone

ASW – Subwoofer



- Designed for music and home cinema
- 200W output power
- 200mm (8") Kevlar cone
- Requires AC power (genset, shorepower or inverter)

ART DE VIVRE PACKAGE

INCLUDES:



- Villeroy & Boch dishware, glassware and flatware kit with Prestige logo - 6 sets
- The fine texture of this delicate white porcelain delights by its elegance, while being practical on a daily basis.
(See Prestige professional website for details)



- Full bedding and towel sets from Mona Lison
 - High-end organic cotton and wool
 - Fitted to each berth onboard
 - Reversible sets for versatility*(See Prestige professional website for details)*
- Mattress battens sets in master stateroom and in VIP stateroom



S-LINE PACKAGE

INCLUDES:

- Brushed light oak hardwood floor for entrance and saloon
- Carpet in saloon and cabins - Vogue
- Exterior cushion upgrade to Abacos indoor/outdoor fabric

Only for Grey oak interior woodwork



Brushed light oak floor and carpet - Vogue



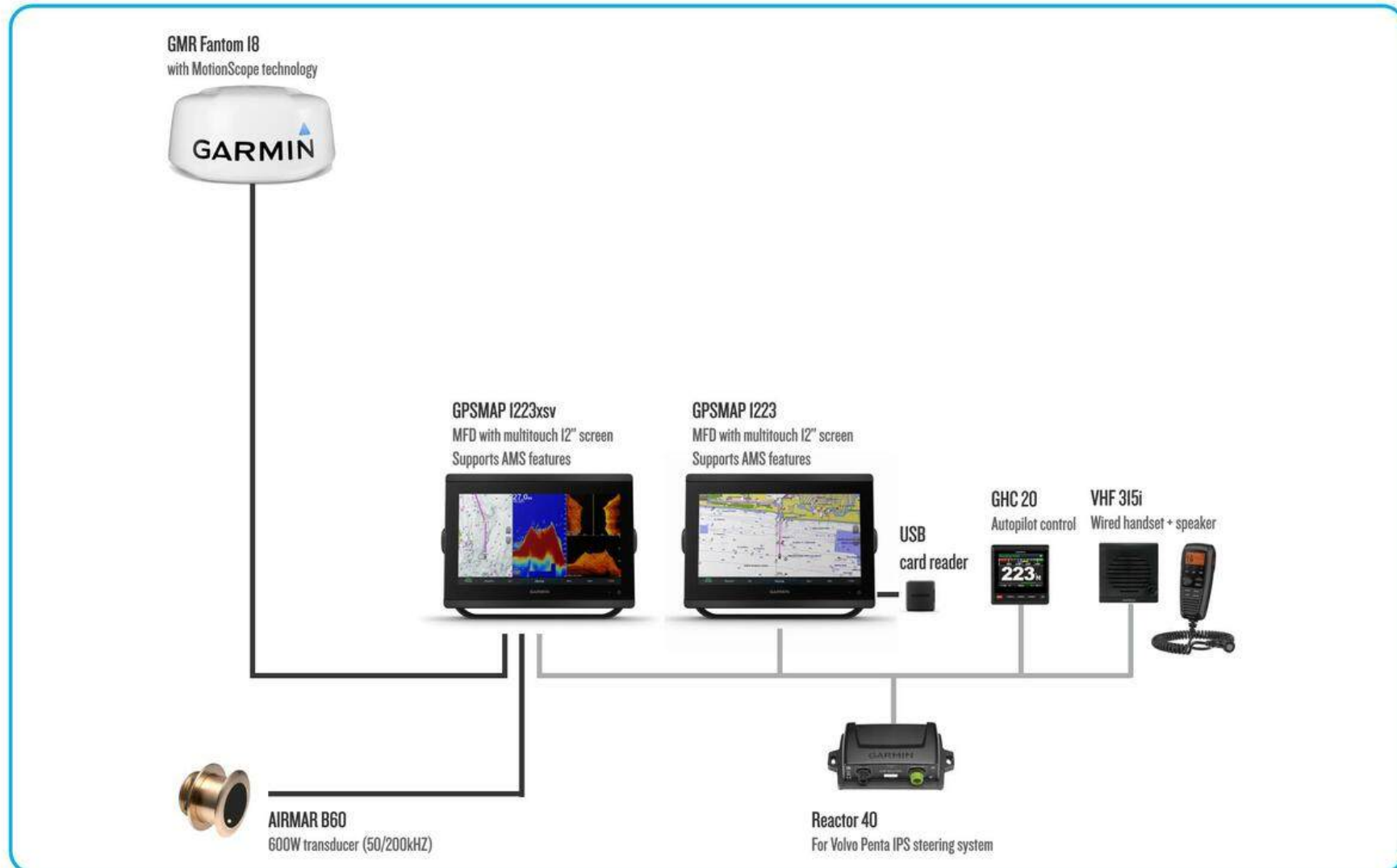
Exterior cushion





2021
2022

PRESTIGE 520s - ELECTRONIC PACK



Garmin Ltd - Non contractual document - Juin 2021 #1

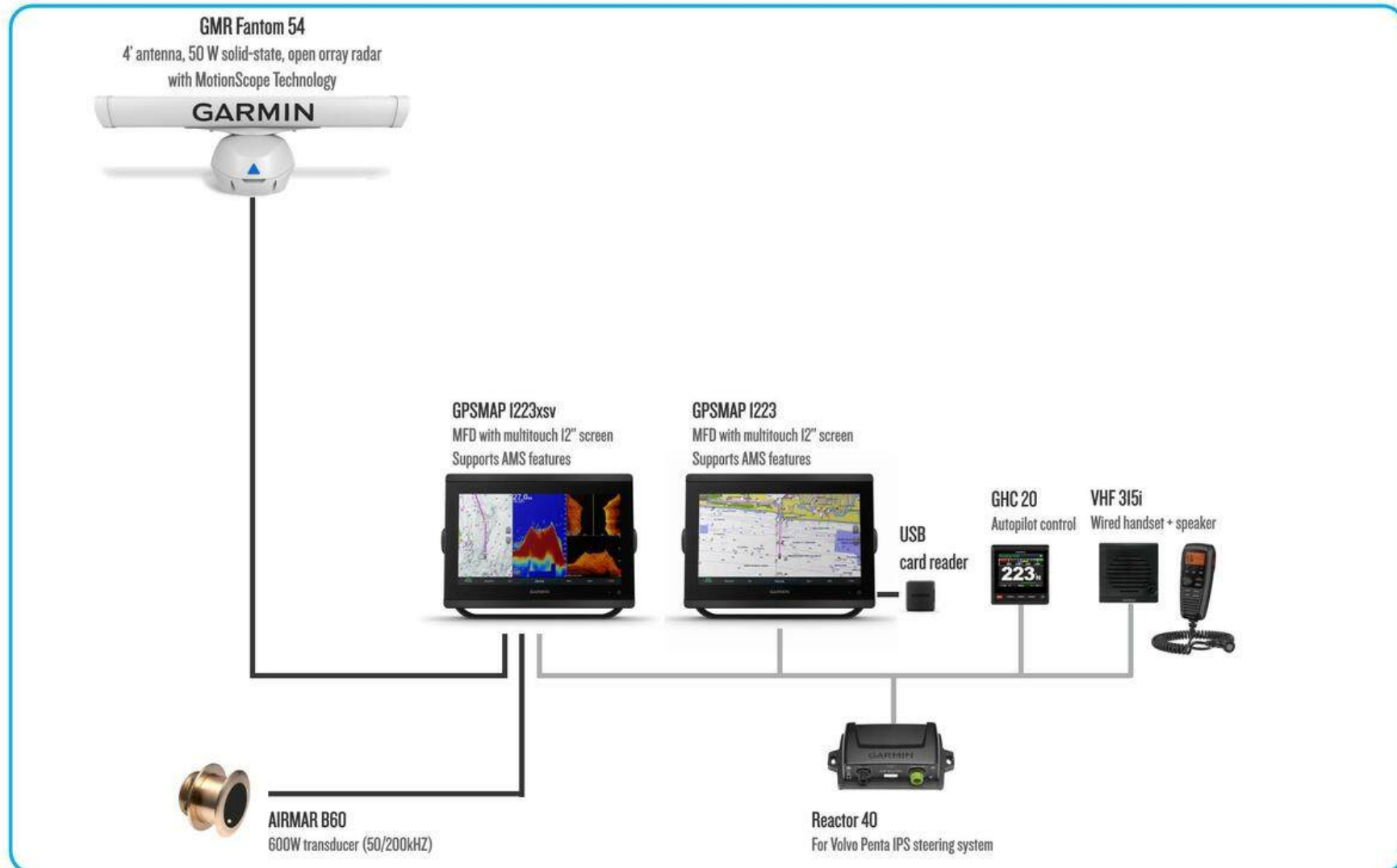
GARMIN.

18



2021
2022

PRESTIGE 520s - ELECTRONIC PACK (OPEN ARRAY RADAR)



Garmin Ltd - Non contractual document - Juin 2021 #1

GARMIN.

20

GARMIN®

2021
2022

PRESTIGE 520/520s - ELECTRONIC PACK



GMR™ Fantom 18 - Solid-state radome with MotionScope Technology™



- **40 W Solid-state dome radar** (Low power consumption, instant turn on and no warm up delay)
- **MotionScope™ technology** uses the Doppler effect to detect moving targets so you can avoid potential collisions
- Basic features: Dynamic Auto Gain, Sea Filter, MARPA support, Radar overlay, Guard zone
- **Advanced features:** Auto Bird Gain, Echo Trails, Pulse Compression, Target Size, Dual Range
- Excellent close- and long-range detection from 6m to 48 nm

VHF 315i / VHF 315



- Up to 25W transmission output
- **All functions and settings are managed via the GHS 11i/GHS 11**
- 4" active speaker with volume knob (supplied)
- Initiate a VHF call directly from your Garmin NMEA 2000 plotter and VHF
- Full Class D Digital Selective Calling (DSC) with built-in DSC receiver
- VHF 315i fits for **EMEA** / VHF 315 fits for **US/Canada**

GPSMAP® 1223/1223xsv



- **12" full HD IPS touchscreen display**
- Built-in 10Hz GPS/GLONASS/GALILEO receiver
- **Built-in Wi-Fi® for ActiveCaptain™ connectivity**
- **Radar compatible**
- NMEA® 0183 and NMEA® 2000 compatible
- **AMS Compatible**
- Xsv version includes a built-in **Traditional sonar** and **ClearVü/SideVü** scanning sonar with CHIRP technology
- Transmit power: 1 kW RMS (8000 W peak-to-peak)

Airmar Transducers B60



- Thru-hull transducer
- Tilted element : 20°
- Traditional sonar : **HD-ID 600W**
- **Water temperature sensor**

Reactor™ 40 Volvo Penta



- **Developed in close partnership with Volvo Penta**
- **Solid-state 9-axis AHRS**, reacts to the sea to hold course, even when the boat is unstable
- Minimises heading error, course deviation, rudder movement, power consumption, while providing a comfortable ride
- Minimal commissioning and calibration
- Provides advanced features to compatible Garmin chartplotters such as route following, route engage, and Autopilot Virtual Device



2021
2022

PRESTIGE 520s - OPTIONS

OPTION

TV SAT ANTENNAS (EMPTY DOMES)



GTV5
Pair of dummy units (45cm)

OPTION

AIS TRANSCEIVER (CLASS B/S0)



AIS 800
AIS Transceiver (Class B/S0)

OPTION

SCANNING SONAR



GT5IM-THP
Pair of CHIRP ClearVü/SideVü transducers
(connects directly to a GSD25 / XSV units)

OPTION

MARINE CAMERA



GC200 IP
Full HD Marine camera

Garmin Ltd - Non contractual document - Juin 2021 #1

2021
2022

PRESTIGE 520s - OPTIONS (OPEN ARRAY RADAR ELECTRONIC PACK)



OPTION

TV SAT ANTENNAS (EMPTY DOMES)



GTV5
Pair of dummy units (45cm)

OPTION

AIS TRANSCEIVER (CLASS B/S0)



AIS 800
AIS Transceiver (Class B/S0)

OPTION

SCANNING SONAR



GT5IM-THP
Pair of CHIRP ClearVü/SideVü transducers
(connects directly to a GSD25 / XSV units)

OPTION

MARINE CAMERA



GC200 IP
Full HD Marine camera

Garmin Ltd - Non contractual document - Juin 2021 #1

2021
2022

PRESTIGE 520/520s - OPTIONS

GMR™ Fantom 54 - Solid-state Open array radar with MotionScope Technology™



- **50 W solid-state open-array radar with pedestal** (Low power consumption, instant turn on and no warm up delay)
- **MotionScope™ technology** uses the Doppler effect to detect moving targets so you can avoid potential collisions
- Basic features: Dynamic Auto Gain, Sea Filter, MARPA support, Radar overlay, Guard zone
- **Advanced features:** Auto Bird Gain, Echo Trails, Pulse Compression, Target Size, Dual Range
- Excellent close- and long-range detection from 6 m to 72 nm

AIS 800 - AIS Transceiver Black Box



- AIS Transceiver Black Box
- Integral splitter box
- Integrated AIS target data with information displayed directly on the chartplotter
- **ClearTrack™ technology** ensures that reception is uninterrupted
- Alarm (CPA) via Radar to avoid collisions
- Integral GPS receiver and Dual channel AIS receiver
- Class A and class B reception

GTV5 - TV Sat Dome (Dummies)



- Pair of empty TV Sat domes
- 45 cm diameter antenna
- Dummies units only

GT51M-THP - Scanning sonar transducers



- Perfect for the coastal and offshore fishing
- Provides clear and crisp fish arches with superior target separation as well as clear pictures of objects, structure and fish that pass below and to each side of your boat
- Traditional CHIRP : 600W (mid-band CHIRP 80-160 kHz)
- CHIRP ClearVü/SideVü : 500W (CHIRP 260/455 kHz)

GC200 IP - Marine camera



- 2.0 MPixel 1/2.8" SONY STARVIS CMOS
- Resolution : up to 1920 x 1080 pixels
- Viewing angle: 99.0° x 74.0°
- **Automatic infra-red functionality**, for day/night (and low-light conditions)

STANDARD DECOR

Standard Decor / Ambiance Standard

- 1 Grey Oak / Chêne grisé
- 2 Martin Weiss
- 3 Casamance Platine
- 4 Standard flooring Fortezza / Plancher standard Fortezza

▼ Interior woodwork / Boiserie intérieure



Grey Oak / Chêne grisé



▼ Interior upholstery / Selleries intérieures



Casamance Platine

Martin Weiss

▼ Flooring / Plancher



Standard flooring Fortezza /
Plancher standard Fortezza

▼ Galley counter top / Plan de travail cuisine



Corian® artic ice

S-LINE DECOR

S-Line decor - Ambiance S-Line

- 1 White Oak / Chêne flotté
- 2 Horizon
- 3 Standard flooring Fortezza
- 4 Corian® Venaro White

▼ Interior woodwork / *Boiserie intérieure*



White Oak / Chêne flotté



▼ Interior upholstery / *Selleries intérieures*



Dolce

Pirate

Horizon

▼ Flooring / *Plancher*



Standard flooring Fortezza /
Plancher standard Fortezza

Brushed light oak /
Chêne brossé blanchi

Brushed wenge /
Wengé brossé

▼ Galley counter top / *Plan de travail cuisine*



Corian® Venaro White

Laminam® Greco black

GREY OAK DECOR

Grey Oak Decor / *Ambiance Chêne Grisé*

- 1 Brushed light oak / *Chêne brossé blanchi*
- 2 Brittany Taupe
- 3 Corian® artic ice
- 4 Espresso leatherette

▼ Interior woodwork / *Boiserie intérieure*



Grey oak / *Chêne grisé*



▼ Interior upholstery / *Selleries intérieures*



Brittany Taupe



Brittany Cloud



Casamance Platine



Marlin Weiss

▼ Flooring / *Plancher*



Brushed light oak /
Chêne brossé blanchi



Brushed wenge /
Wengé brossé

▼ Galley counter top / *Plan de travail cuisine*



Corian® artic ice



Laminam® greco black

WENGE HIGH GLOSS DECOR

Wenge high gloss decor / *Ambiance chêne fumé grand brillant*

- ❶ Brushed light oak / *Chêne brossé blanchi*
- ❷ Brittany cloud
- ❸ Laminam® greco black
- ❹ Carpeting Vogue / *Moquette Vogue*
- ❺ Dolce black

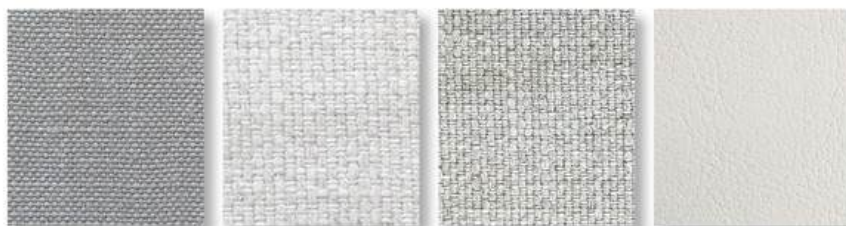
▼ Interior woodwork / *Boiserie intérieure*



Wenge high gloss / *Wengé grand brillant*



▼ Interior upholstery / *Selleries intérieures*



Lin souris

Brittany Cloud

Casamance Platine

Marlin Weiss

▼ Flooring / *Plancher*



Brushed light oak /
Chêne brossé blanchi

Brushed wenge /
Wengé brossé

▼ Galley counter top / *Plan de travail cuisine*



Laminam® greco black

Corian® artic ice

WENGE DECOR

Wenge Decor / *Ambiance Chêne fumé*

- 1 Brushed wenge / *Wengé brossé*
- 2 Casamance Platine
- 3 Laminam® greco black
- 4 Espresso leatherette

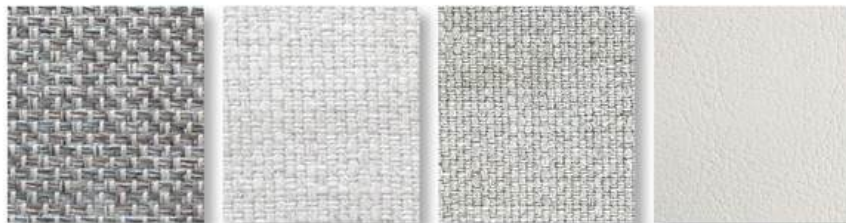
▼ Interior woodwork / *Boiserie intérieure*



Wenge / *Chêne fumé*



▼ Interior upholstery / *Selleries intérieures*



Brittany Taupe

Brittany Cloud

Casamance Platine

Marlin Weiss

▼ Flooring / *Plancher*



Brushed wenge /
Wengé brossé

Brushed light oak /
Chêne brossé blanchi

▼ Galley counter top / *Plan de travail cuisine*



Laminam® greco black

Corian® artic ice

LEATHERS

Leathers

Foglizzo, Italian leather designer, has inherited the best savoir-faire for generations and uses traditional techniques combined with innovative designs. Prestige has selected a choice of top-of-the-range leather and nubuck in soft and timeless colours.



Duke 01 Pearl white



Duke 14 Nude



Duke 04 Caramel *



Duke 45 Taupe *



Duke 02 Choco



Duke 19 Black *

Nubuck



Lugano 11 Cream *



Lugano 14 Stone



Lugano 13 Moro

* Special order request (not included on the price list)

HELM STATION

Helm Station / *Poste de pilotage*

Helm bench / *Banquette pilote*



Espresso leatherette / *Simili cuir espresso*

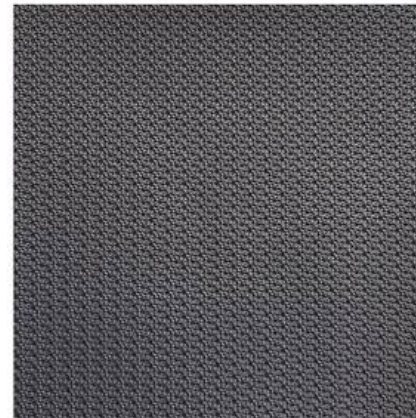


Dolce black leatherette / *Simili cuir dolce black*

Sport seats / *Sièges pilote*



Dolce Leatherette / *Simili cuir Dolce*



Mineral grey leatherette / *Simili cuir gris minéral*

CARPETING - NEW

Carpeting / Moquettes



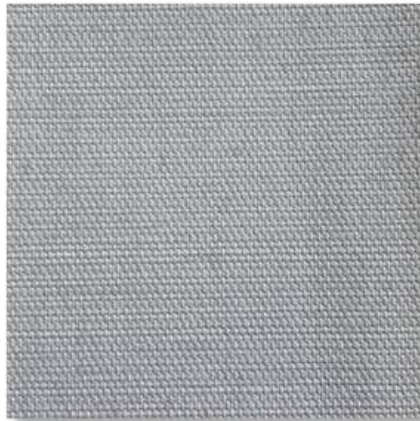
Souplesse



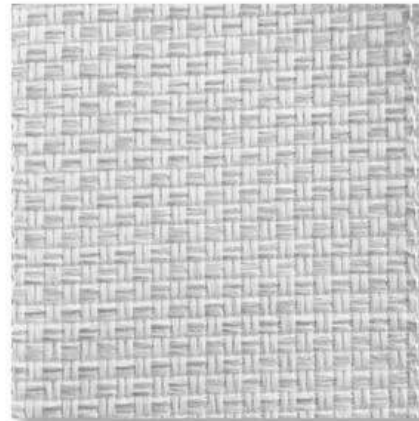
Elegance

EXTERIOR CUSHIONS

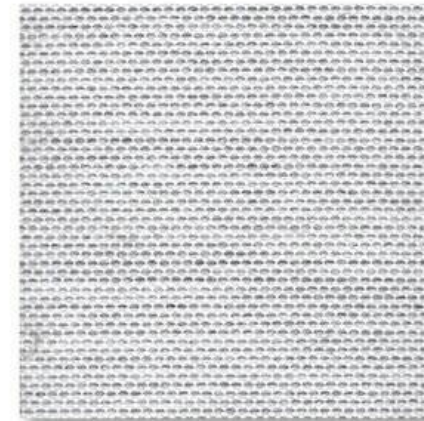
F-LINE - Exterior cushions / *Selleries extérieures*



Glacier



Vita

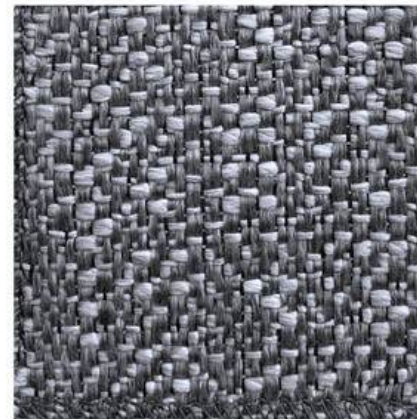


Marble*
*Prestige 690 Only / Uniquement

S-LINE - Exterior cushions / *Selleries extérieures*



Iron



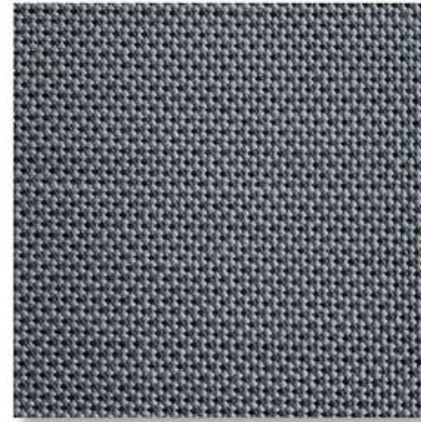
Fidji

EXTERIOR CUSHIONS

Exterior canvas / *Capotages extérieurs*

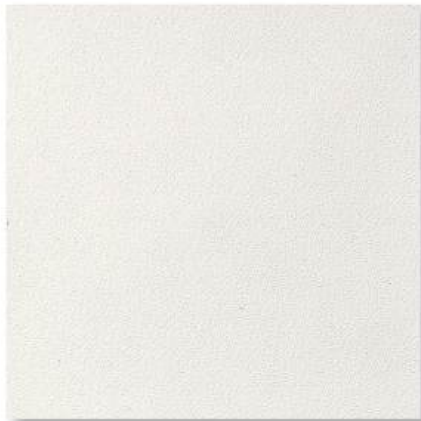


Sunbrella oyster

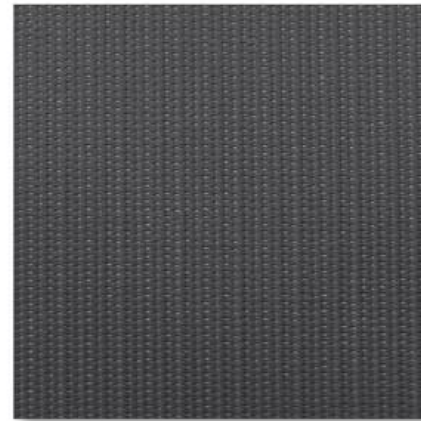


Sunbrella steel

Protective covers / *Protections extérieures*



White PVC



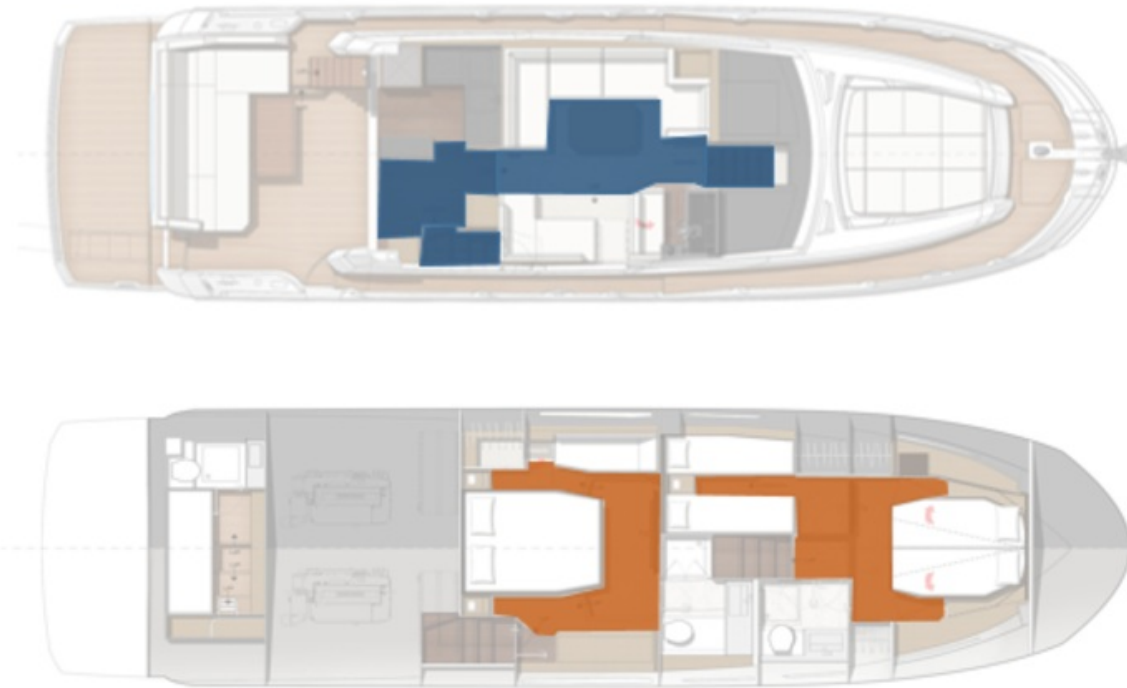
Sunworker charcoal

CARPETING

Zones

Standard

Option



Selection



Standard: Souplesse

Or

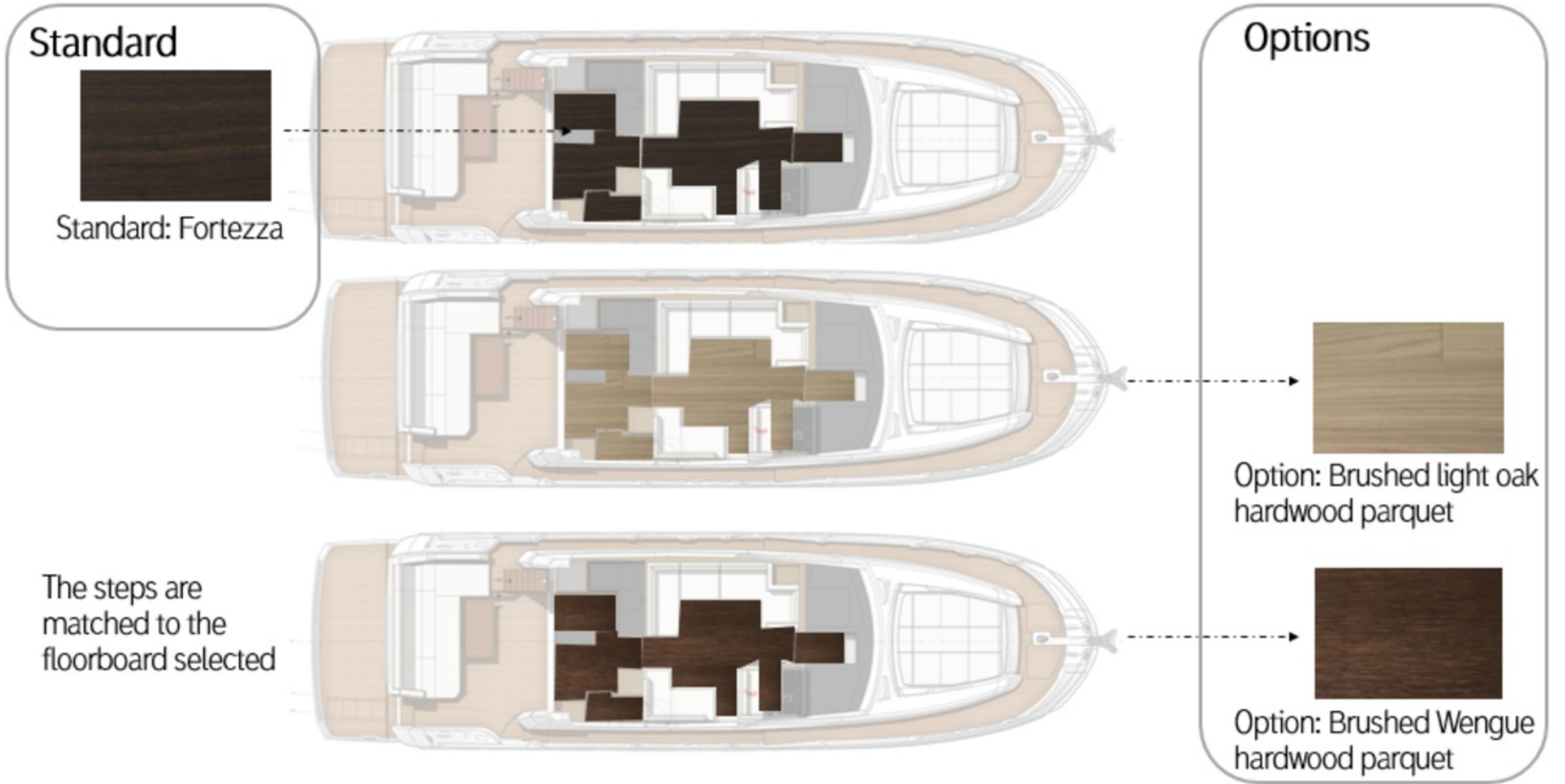


Option: Elegance

*Carpeting is removable

**Moquette amovible*

WOOD FLOORING



HULL PAINT




PRESTIGE®
LUXURY MOTOR YACHTS

AWLGRIP®
AkzoNobel

Customize your
PRESTIGE with AYLGRIP
Topcoat

HULL PAINT



Prestige guides you by selecting 10 AWLGRIP colors*



Champagne Metallic



E1009 - Crystal Silver Metallic



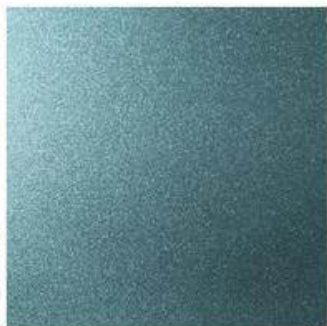
E1004 - Twilight Gray Metallic



E5013 - Blue Steel Metallic



Flag Blue



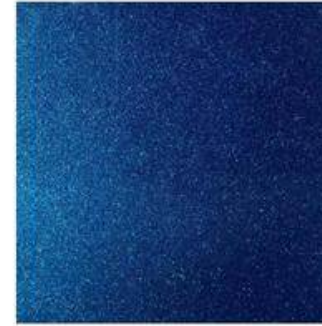
E5019 - Horizon Blue Metallic



E5007 - Aquamarine Metallic



E5011 - Bright Atlantic Blue Metallic



E5010 - Enchanted Blue Metallic



Largo Blue

*Additional colors are available

HULL PAINT



Unmistakeable finishes



> PRESTIGE 460 S with *Horizon Blue Metallic* hull paint



Reference: E5019



HULL PAINT



Unmistakeable finishes



> PRESTIGE 500 S with *Champagne Metallic* hull paint



HULL PAINT



Unmistakeable finishes

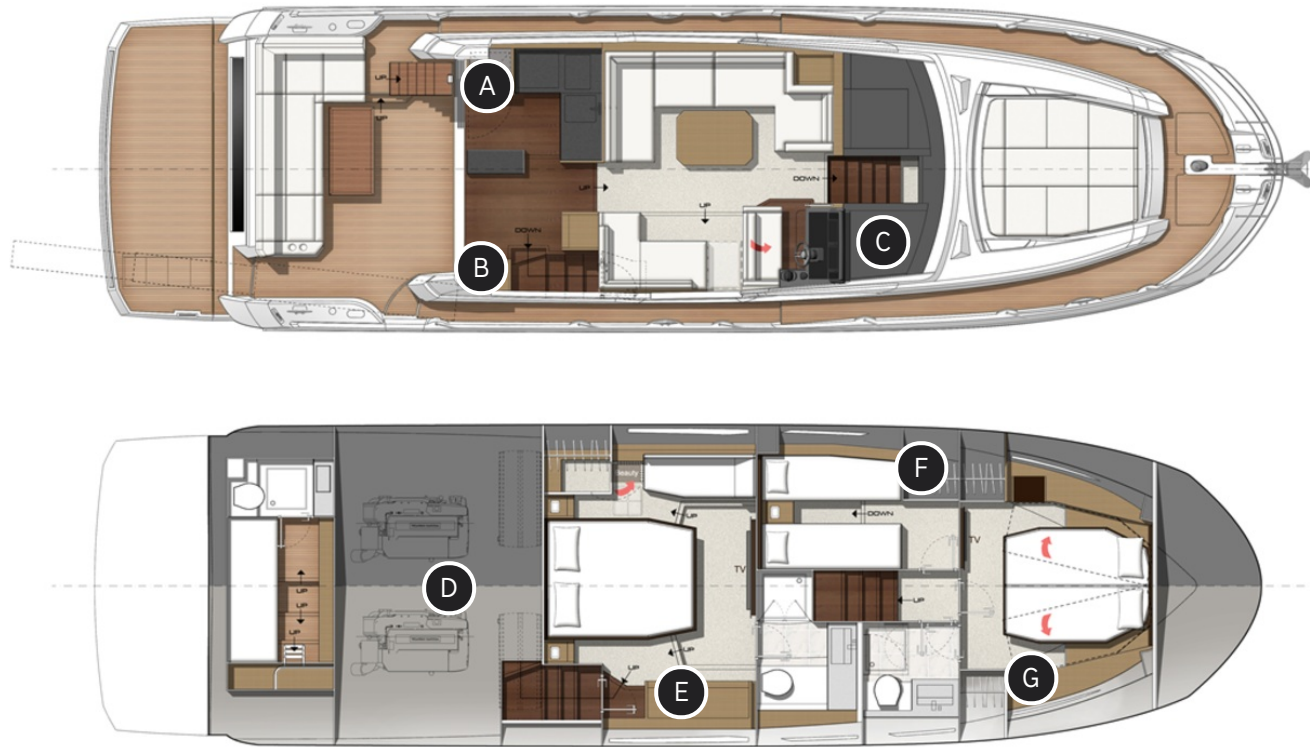


> PRESTIGE 590 *Crystal Silver*
Metallic hull paint



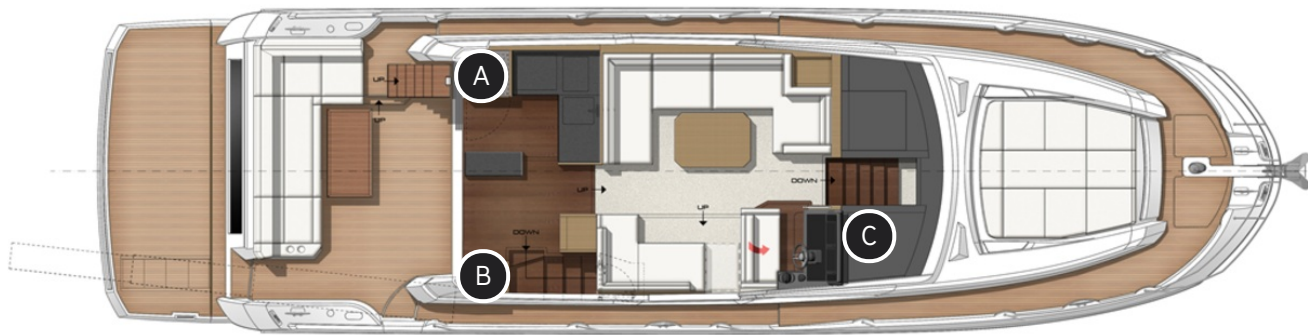
Reference: E1009

CHILLED WATER MEDITERRANEAN AIR CONDITIONING: 55 000 BTU

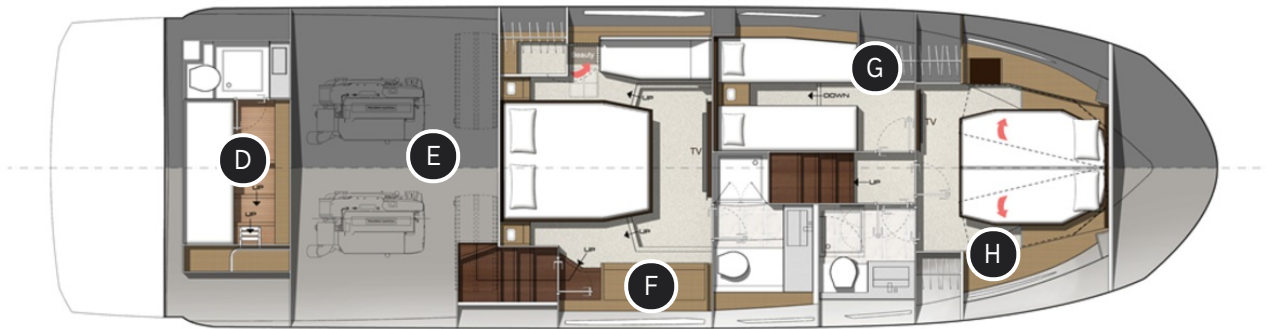


- A Air handler 6 000 BTU
- B Air handler 12 000 BTU
- C Air handler 12 000 BTU
- D Chillers 48 000 BTU
- E Air handler 12 000 BTU
- F Air handler 4 000 BTU
- G Air handler 9 000 BTU

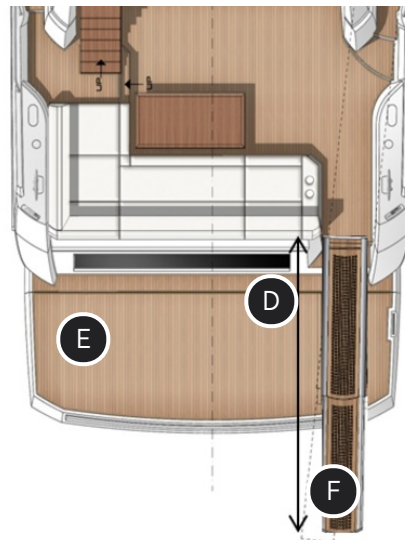
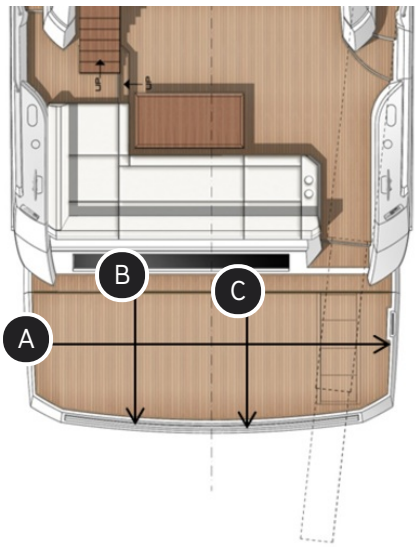
CHILLED WATER TROPICAL AIR CONDITIONING: 71 000 BTU



- A** Air handler 6 000 BTU
- B** Air handler 18 000 BTU
- C** Air handler 12 000 BTU
- D** Air handler 4 000 BTU (optional)
- E** Chillers 60 000 BTU
- F** Air handler 18 000 BTU
- G** Air handler 4 000 BTU
- H** Air handler 9 000 BTU

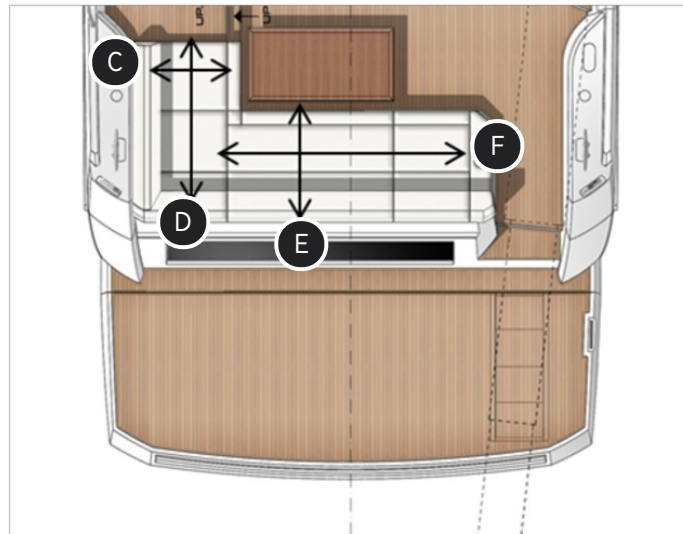
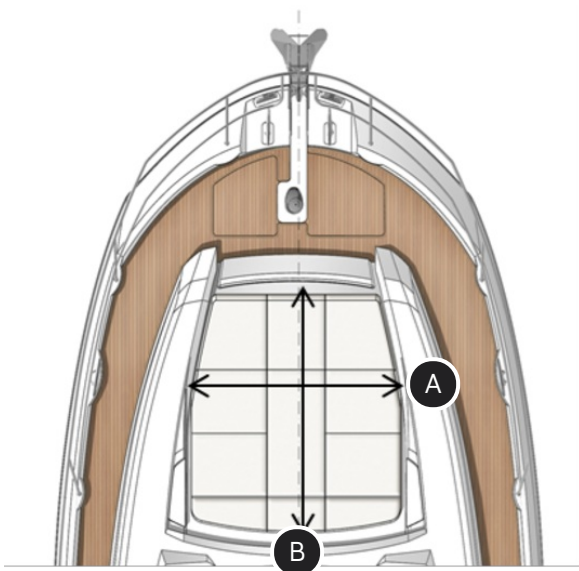


PLATFORM



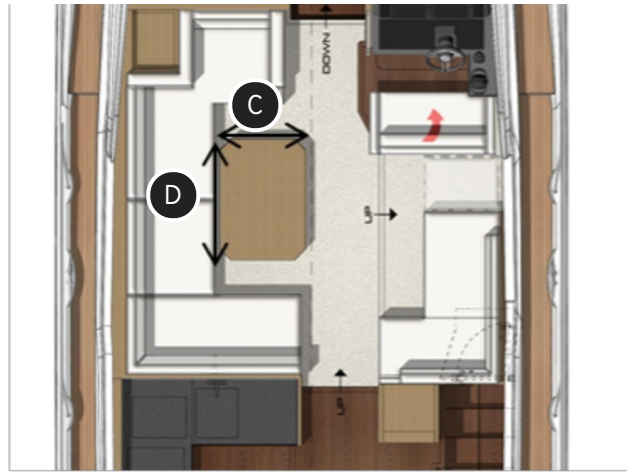
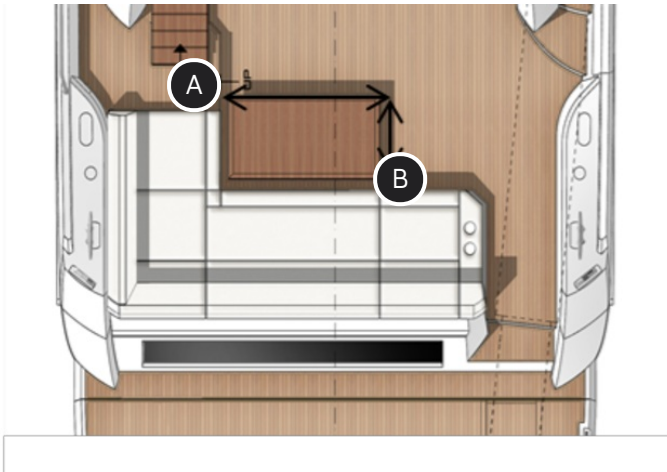
- A L : 418 cm / 13'8"
- B L : 147 cm / 4'9"
- C L : 126 cm / 4'1"
- D L : 290 cm / 9'6"
- E Platform load limit : 300 kg / 661 Lbs
- F Gangway load limit : 150 kg / 331 Lbs

SUNPADS



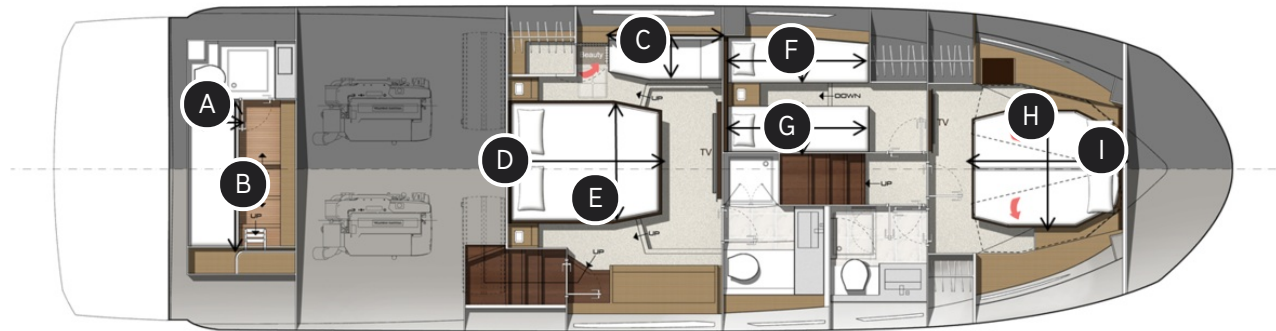
- A** L : 187 cm / 6'1"
- B** L : 217 cm / 7'1"
- C** L : 66 cm / 2'1"
- D** L : 184 cm / 6'
- E** L : 90 cm / 2'11"
- F** L : 207 cm / 6'9"

TABLES



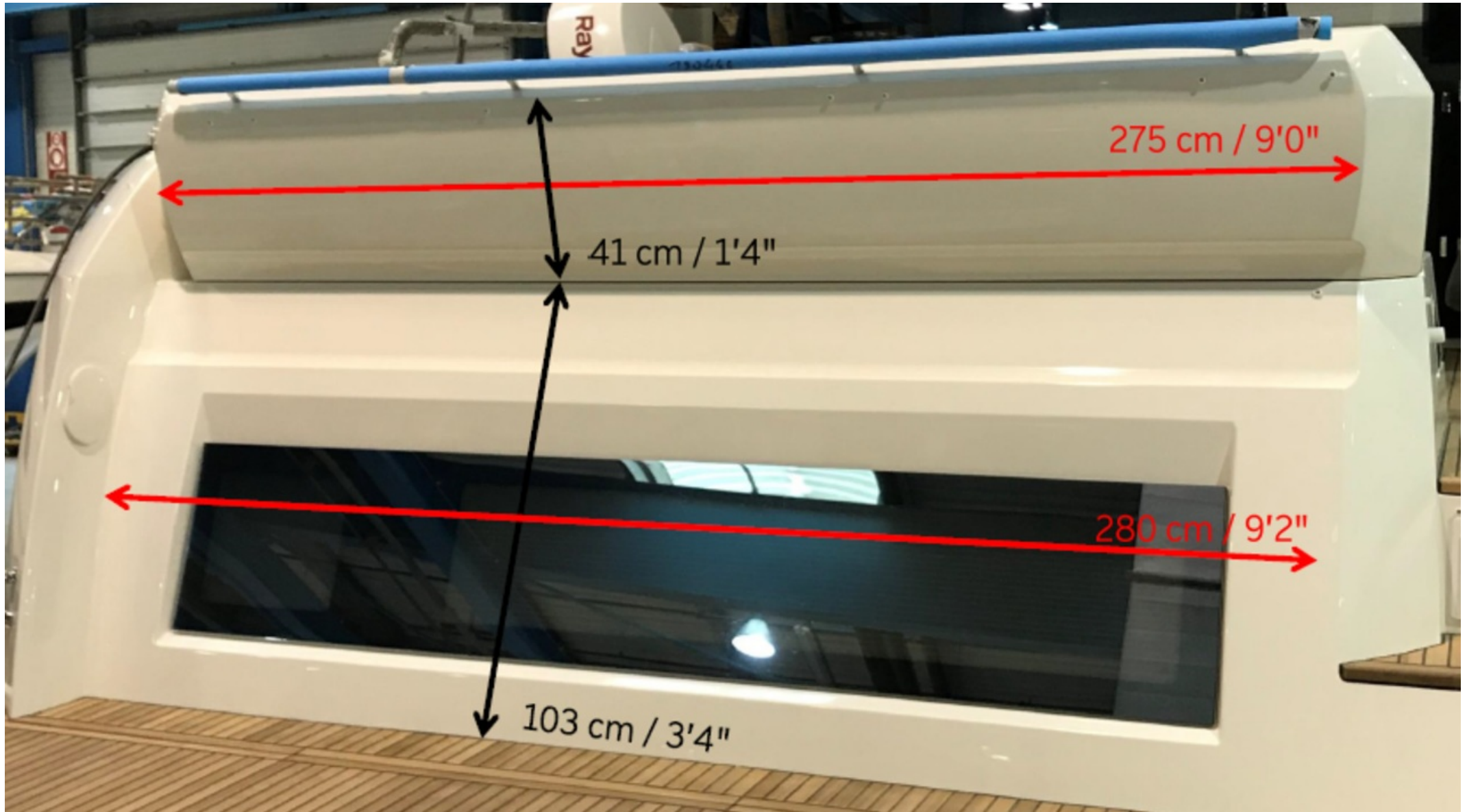
- A** L : 158 cm / 5'2"
- B** L : 72 cm / 2'4"
- C** L : 70 cm / 2'3"
- D** L : 70 cm - 140 cm / 2'3" - 4'7"

BEDS

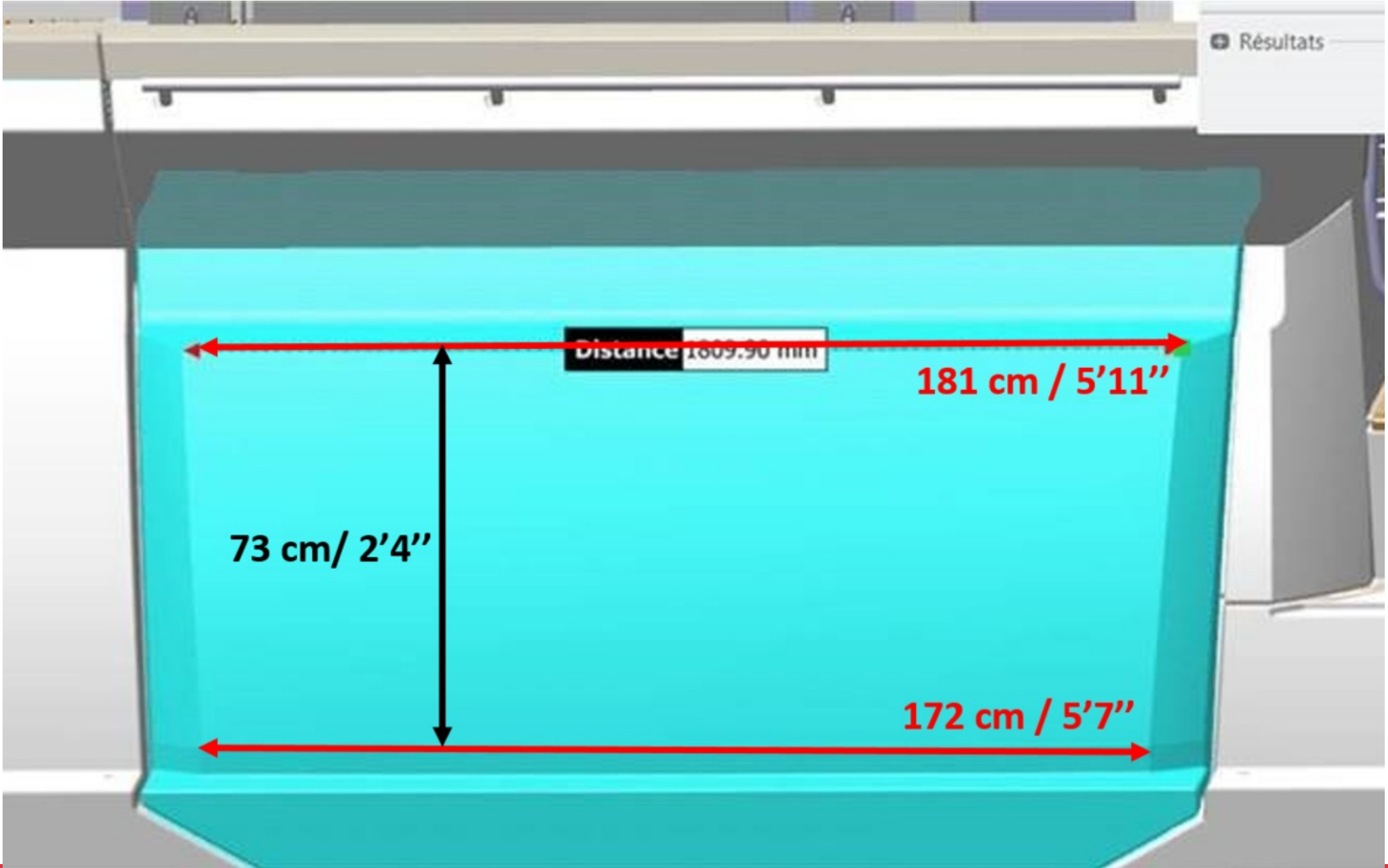


- A** L : 70 cm / 2'3"
- B** L : 200 cm / 6'6"
- C** L : 155 cm x 55 cm / 5'1" x 1'9"
- D** L : 200 cm / 6'6"
- E** L : 160 cm / 5'2"
- F** L : 192 cm x 62 cm / 6'3" x 2'
- G** L : 192 cm x 62 cm / 6'3" x 2'
- H** L : 156 cm / 5'1"
- I** L : 200 cm / 6'6"

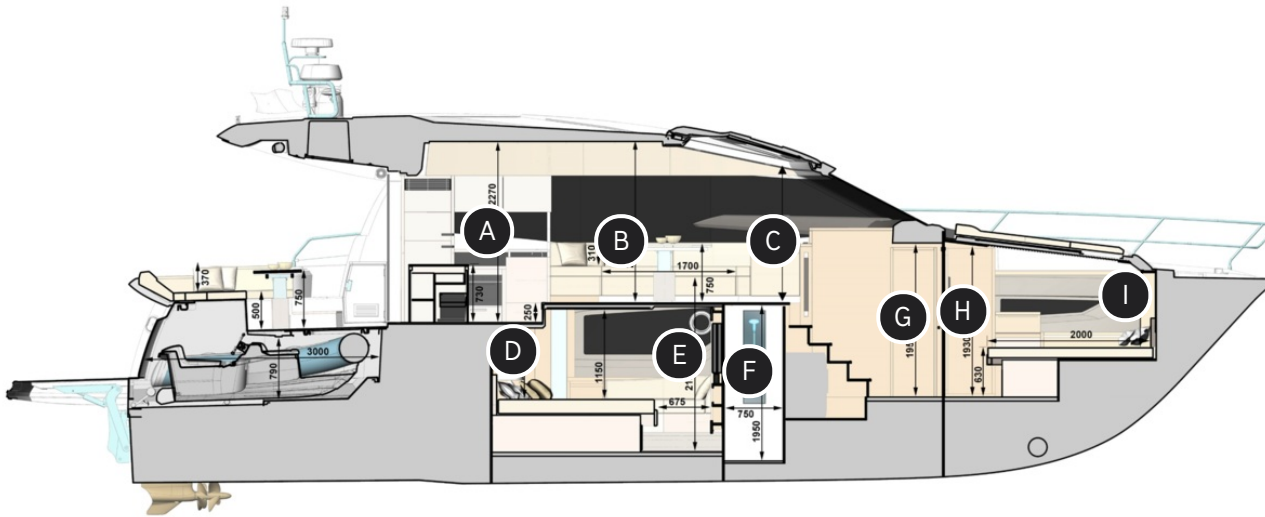
TRANSOM DIMENSION - SKIPPER CABIN VERSION



TRANSOM DIMENSION - GARAGE VERSION

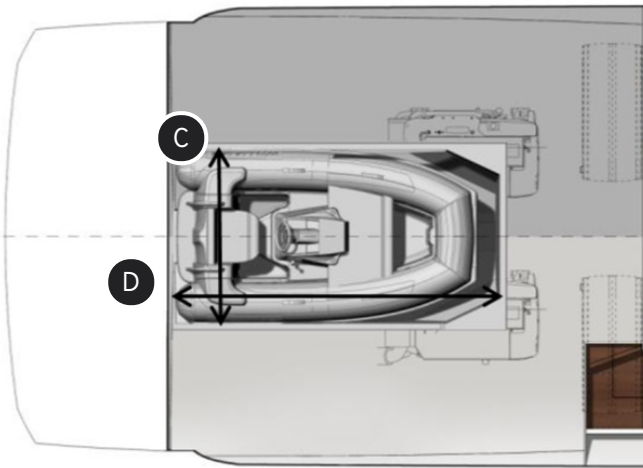
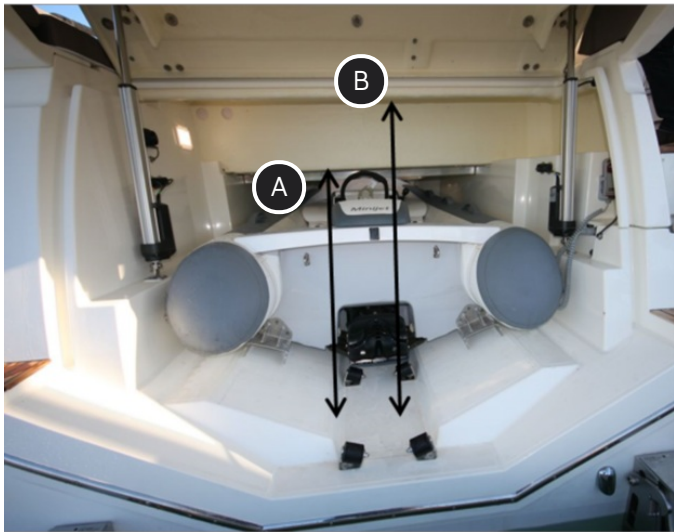


HEADROOM



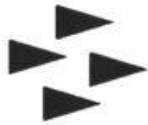
- A** Galley : 227 cm / 7'5"
- B** Saloon : 203 cm / 6'7"
- C** Saloon : 197 cm / 6'5"
- D** Master stateroom : 91 cm / 2'11"
- E** Master stateroom : 183 cm / 6'
- F** Shower : 195 cm / 6'4"
- G** Hall : 195 cm / 6'4"
- H** VIP stateroom : 193 cm / 6'3"
- I** VIP stateroom : 90 cm / 2'11"

TENDER GARAGE



- A L : 81 cm / 2'7"
- B L : 123 cm / 4'0"
- C L : 166 cm / 5'5"
- D L : 289 cm / 9'5"

PERFORMANCE: IPS 600 - CRUISING LOAD



Prestige 520S – Performance (Cruising load)

Speed (knots)	Engine RPM	Fuel Rate (litres/h)	Fuel Rate (US Gal/h)	Range (Nautical Miles)
3,7	599	2,2	0,6	2227
5,5	997	5,8	1,5	1237
8,1	1503	16,6	4,4	634
9,3	1807	29,4	7,8	411
10,1	2003	38,6	10,2	340
11,3	2198	51,9	13,7	283
12,1	2397	64,3	17,0	245
15,1	2599	78,2	20,7	251
16,4	2808	96,4	25,5	221
18,6	2991	110,5	29,2	219
20,8	3180	131,5	34,7	206
24,7	3472	157,4	41,6	204
26,0	3557	168,9	44,6	200



Top Speed is 26 kts with a consumption of 169L/h
 Cruising Speed is 21 kts with a consumption of 131L/h



2 x Volvo D6
 IPS 600 – 880HP



Cruising Load: 20000 kg



Volvo TS6



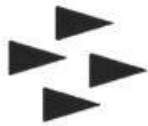
Full



Full

* Performance will vary depending on sea conditions, water and air temperatures, cleanliness of hull and propellers and the loading of the vessel

PERFORMANCE: IPS 650 - FULL LOAD



Prestige 520S – Performance (Full load)

Speed (knots)	Engine RPM	Fuel Rate (litres/h)	Fuel Rate (US Gal/h)	Range (Nautical Miles)
8,1	1500	19,0	5,0	554
12,4	2500	74,0	19,5	218
15,5	2800	94,0	24,8	214
17,8	3000	115,0	30,4	201
20,0	3200	130,0	34,3	200
21,9	3350	143,0	37,8	199
23,7	3500	159,0	42,0	194
26,8	3700	177,0	46,8	197
28,1	3800	192,0	50,7	190



2 x Volvo D6
IPS 650 – 960HP



Cruising Load: 20700 kg



Volvo TS6



Full

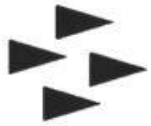


Full

Top Speed is 28 kts with a consumption of 192L/h
Cruising Speed is 23 kts with a consumption of 150L/h

* Performance will vary depending on sea conditions, water and air temperatures, cleanliness of hull and propellers and the loading of the vessel

PERFORMANCE: IPS 650 - CRUISING LOAD



Prestige 520S – Performance (Cruising)

Speed (knots)	Engine RPM	Fuel Rate (litres/h)	Fuel Rate (US Gal/h)	Range (Nautical Miles)
7,8	1500	19,0	5,0	534
12,8	2500	72,0	19,0	230
15,8	2800	92,0	24,3	223
18,1	3000	113,0	29,9	208
20,5	3200	125,0	33,0	213
22,6	3350	141,0	37,2	208
24,7	3500	156,0	41,2	205
26,2	3700	172,0	45,4	198
28,8	3800	193,0	51,0	194



2 x Volvo D6
IPS 650 – 960HP



Cruising Load: 20200 kg



Volvo TS6



Full



Full



Top Speed is 29 kts with a consumption of 193L/h

Cruising Speed is 23 kts with a consumption of 145L/h

* Performance will vary depending on sea conditions, water and air temperatures, cleanliness of hull and propellers and the loading of the vessel

NEW VOLVO MOTORIZATION



NEW D6

Model Year 2020

10% POWER INCREASE

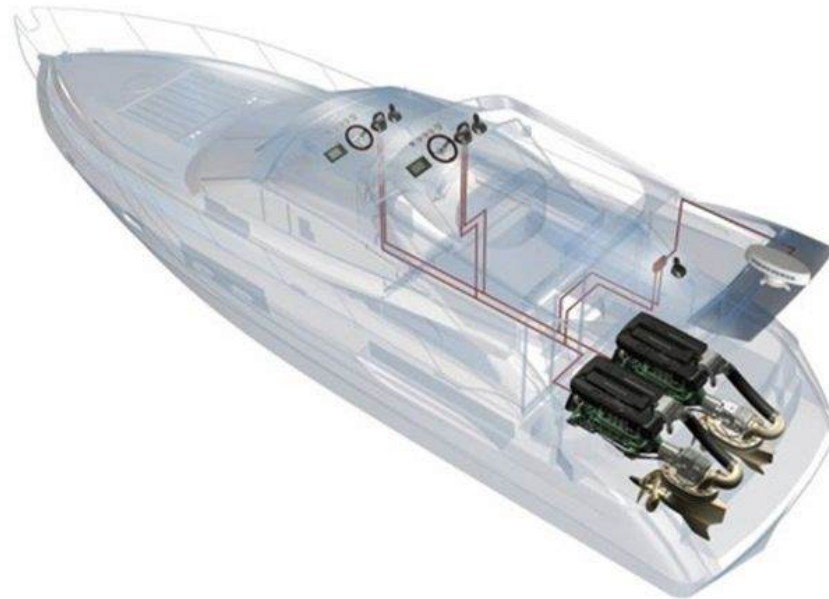
30% LOWER SERVICE COST

30% INCREASED RELIABILITY

STATE-OF-THE-ART TECHNOLOGY

NEW VOLVO MOTORIZATION

D6 MODEL YEAR 2020 – NEW GENERATION



Lower cost of ownership
Longer maintenance intervals and less service items

Increased power
A new range of D4/D6 engines with increased power output. Top specification at 480 hp

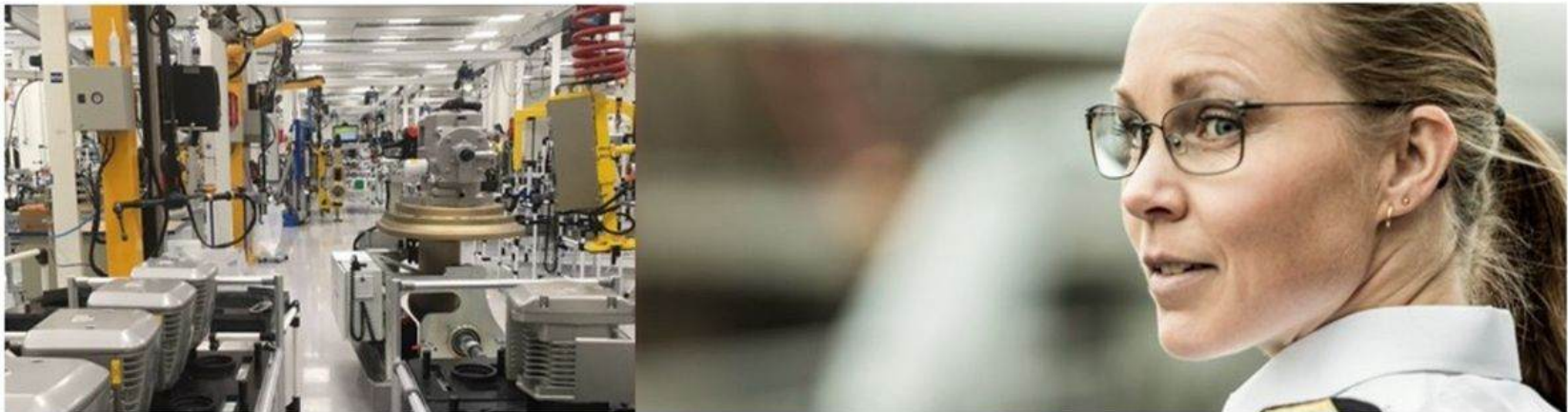
Increased Reliability
New design and material in exposed items will gain total reliability

State-of-the-Art Technology
Facelift on major parts of the platform to secure latest technology and design

NEW VOLVO MOTORIZATION

INCREASED RELIABILITY

- The new D6 package will offer **30%** increased reliability
 - Strengthened key components, such as bearings, gears, shafts and housing
 - Totally new IPS and DPI assembly line built in a controlled clean area
 - New manufacturing machining, new steel quality in gears and shafts
 - Improved oil filtration, new sensors to monitor product health
 - Service indication in user display



NEW VOLVO MOTORIZATION

LOWER COST OF OWNERSHIP

- The new D6 package will offer **30%** lower maintenance cost
 - Longer service intervals
 - Synchronized maintenance intervals between engine and transmission
 - Less service items
 - More efficient maintenance operations
 - Service indication in user display
 - Increased fuel efficiency



NEW VOLVO MOTORIZATION

INCREASED PERFORMANCE

- The new D6 package will offer increased comfort and improved user experience
 - Increased power by up to 10%
 - Smoother running engine with new high efficient injection system
 - IPS with silent idling mode
 - Major production facility investment for producing higher quality and performance products
 - New EVC 2 platform, designed from a complete boat level perspective
 - EVC 2 offers One connection point and possibility to order, deliver and maintain EVC system, independent of driveline configuration



NEW VOLVO MOTORIZATION

NEW VISUAL DESIGN

Control levers and joysticks will get a new look: satin grey instead of chrome.



NEW VOLVO MOTORIZATION

SUMMARY

- Main benefits for the End Customer
 - Lower cost of ownership
 - Improved reliability and durability
 - Increased performance
 - Maintenance Assistant in user display
 - Enhanced fuel efficiency
 - Improved satisfaction thanks to improved component traceability



THE MOTOR YACHT BY PRESTIGE

PRESTIGE 520S

Photographs of these presented models are not contractually binding, and may include optional equipment.

Interior and exterior decoration as well as equipment may be modified without prior notice.



PRESTIGE®

LUXURY MOTOR YACHTS

